



integrated spectral solutions



THE SPECTRAL SENSING COMPANY

Monolithic micro spectrometers for diagnostic and process applications

Product Overview

UV VIS

Micro Spectrometer

UV VIS /M*



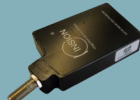
54 x 31 x 9.1 mm³

UV VIS /S*



67 x 36 x 22 mm³

UV VIS /H**



69.3 x 39.6 x 13.6 mm³

Wavelength range: 320 - 1050nm

Resolution: 10 nm_{FWHM}

Sensitivity: 80 E12 cts x nm/Ws @ 650 nm

Optical Interface: *300/330µm/NA0.22 fiber (450 mm/SMA)**SMA

UV VIS SENS

High Sensitivity Micro Spectrometer

UV VIS SENS /M*



54 x 42 x 9.1 mm³

UV VIS SENS /S*



67 x 42 x 22 mm³

UV VIS SENS /H**



69.3 x 47.1 x 13.6 mm³

Wavelength range: 320 - 1050nm

Resolution: 10 nm_{FWHM}

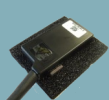
Sensitivity: 20 E15 cts x nm/Ws @ 650 nm

Optical Interface: *300/330µm/NA0.22 fiber (450 mm/SMA)**SMA

UV VIS SENS HR

High Sensitivity Micro Spectrometer

UV VIS SENS HR /M*



54 x 42 x 9.1 mm³

UV VIS SENS HR /S*



67 x 42 x 22 mm³

UV VIS SENS HR /H**



69.3 x 47.1 x 13.6 mm³

Wavelength range: 320 - 1050nm

Resolution: 5 nm_{FWHM}

Sensitivity: 20 E15 cts x nm/Ws @ 650 nm

Optical Interface: *300/330µm/NA0.22 fiber (450 mm/SMA)**SMA

SNR⁺ UV VIS

High Signal to Noise Spectrometer

BT-CCD Detector Technology

SNR⁺ UV VIS /H



165 x 60 x 36 mm³

Wavelength range: 320 - 1050nm

Resolution: 10 nm_{FWHM}

Sensitivity: 20 E15 cts x nm/Ws @ 650 nm

Optical Interface: SMA connector

2C UV VIS

Two Channel Spectrometer

2C UV VIS /H



86 x 57 x 26 mm³

Wavelength range: 2 x 320 - 1050nm

Resolution: 10 nm_{FWHM}

Sensitivity: 20 E15 cts x nm/Ws @ 650 nm

Optical Interface: 2 x SMA 905 connector

UV2NIR

Wide Range Spectrometer

UV2NIR /H



86 x 57 x 26 mm³

Wavelength range: 200 - 1000 nm

Resolution: 10 nm_{FWHM}

Sensitivity: 20 E15 cts x nm/Ws @ 650 nm

Optical Interface: SMA 905 connector

UV2NIR⁺

Wide Range Spectrometer

UV2NIR⁺ /H



165 x 60 x 36 mm³

Wavelength range: 350 - 1700 nm

Resolution: 10 nm_{FWHM} / 16 nm_{FWHM}

Sensitivity: 80/150 E12 cts x nm/Ws @ 650nm / 1500 nm

Optical Interface: SMA 905 connector

INSION offers a wide range of customized solutions. Please ask for custom-designed spectral sensors, spectrometers, application specific sampling optics, light sources, fibers, filters, diffusors and other application-specific accessories.

INSION has more than 20 years experience in the field of application development. Our overall project support includes hard- and software development, product design and chemometry.



integrated spectral solutions

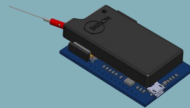


THE SPECTRAL SENSING COMPANY

NIR NT

NIR Micro Spectrometer

NIR NT /S*



67 x 36 x 22 mm³

NIR NT /H**



69.3 x 39.6 x 13.6 mm³

Wavelength range: 900 - 1700 nm

Resolution: 16 nm_{FWHM}

Sensitivity: 150 E12 cts x nm/Ws @ 1500 nm

Optical Interface: *300/330µm/NA0.22 fiber (450 mm/SMA)**SMA

NIR 1.7

NIR Micro Spectrometer

NIR 1.7 /M



61 x 43 x 14.9 mm³

NIR 1.7 /S



108 x 76.6 x 21.5 mm³

NIR 1.7 /H



114.6 x 85 x 48.5 mm³

Wavelength range: 900 - 1700 nm

Resolution: 16 nm_{FWHM}

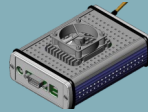
Sensitivity: > 100 E12 cts x nm/Ws @ 1500 nm

Optical Interface: *300/330µm/NA0.22 fiber (280 mm/SMA)

NIR 2.0

NIR Micro Spectrometer

NIR 2.0 /H



114.6 x 85 x 48.5 mm³

Wavelength range: 940 - 2000 nm

Resolution: 16 nm_{FWHM}

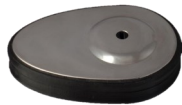
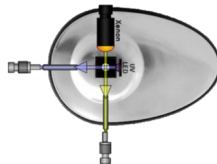
Sensitivity: > 100 E12 cts x nm/Ws @ 1500 nm

Optical Interface: *300/330µm/NA0.22 fiber (280 mm/SMA)

SPEGG

Mobile Analytical System

Cuvette holder, Light source, Spectrometer, Software



133 x 92 x 30 mm³

Wavelength range: 350 - 1000 nm

Resolution: 10 nm_{FWHM}

Sensitivity: 80 E12 cts x nm/Ws @ 650 nm

Optical Interface: Cuvette holder

INSION offers a wide range of customized solutions. Please ask for custom-designed spectral sensors, spectrometers, application specific sampling optics, light sources, fibers, filters, diffusors and other application-specific accessories.

INSION has more than 20 years experience in the field of application development. Our overall project support includes hard- and software development, product design and chemometry.